



WingMan

Snow plough



The Meyer® WingMan™ is a robust commercial-grade plow tailored for business owners seeking efficient snow removal solutions in compact areas like small parking lots, drive-ways, and similar tight spaces. Crafted from lightweight high-strength steel, it's perfect for 1/2-ton and light pickup trucks, ensuring durability without compromising performance.

Highlights

- **Offered in two sizes** to accommodate a variety of applications.
- **Arrives fully assembled**, ready to deploy.
- Pre-drilled holes for **easy snow deflector installation**
- Nite Saber LED lights provide **heightened visibility for safe nighttime operations**.
- **Pistol-grip controller** for easy in-cab blade adjustment

Your benefits

- **Efficient:** Lightweight, high-strength steel for improved fuel efficiency
- **Hassle-free:** Attach or remove in under a minute.
- **Robust:** Commercial-grade hydraulic system provides years of reliable performance
- **Peace of Mind:** safeguarded by our industry-leading 5-year warranty coverage.



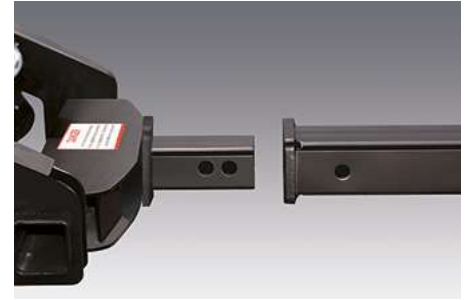
Performance features

Plow blade

The Meyer WingMan features the Quick-Link™ mounting system for seamless attachment and detachment. It is offered in two sizes: 6.8-foot length x 22-inch height or 7.5-foot length x 26-inch height, ensuring suitability for various applications.

Continuous welding on the outside ribs enhances the blade's strength and performance. The slot and tab construction enables a sturdy, precise fitting plow, and its laser-cut steel components are assembled using robotic welders for consistent quality and years of dependable service. Pre-drilled holes make adding a snow deflector a breeze.

Each Meyer WingMan plow is coated with Meyer Dura-Slick™ paint, a durable automotive-style finish infused with Teflon®, for superior snow-rolling action.



Operating System

The Wingman's commercial-grade hydraulic system offers reliable performance and the pistol grip controller allows for one-handed blade movement. The crank stand allows effortless adjustment of the plow for hassle-free attachment/detachment, while integrated caster wheels simplify maneuverability and storage of the moldboard. The Wingman is rounded out with Nite Saber LED lights to give enhanced visibility for safe operation, even in low-light conditions.



Gallery



Related products

Drive Pro

Snow plough



Lot Pro

Snow plough



Super-V3

Snow plough



Technical data

	WM 6'8"	WM 7'6"
Construction		
Number of cellasto springs	2	2
Dimensions		
Plough height	559 mm	660 mm
Clearing width	1,829 mm one-sided blade	2,057 mm one-sided blade
Total width	2,032 mm	2,286 mm
Weights		
Approx weight	168 kg	181 kg



© Aebi Schmidt Group
www.aebi-schmidt.com

Aebi Schmidt Holding AG
CH-8050 Zurich, Switzerland

All rights reserved. Technical data is
subject to change.
Illustrations are not binding. Errors and
amendments excepted.

Document created on 14 JUN 2024

