



IntelliOPS Airport

Operations & Fleet Management System



The professional and continuous use of data and digital applications increases your performance and efficiency, saves resources, leads to lower CO₂ emissions and improves safety. Thanks to the secure Aebi Schmidt IntelliOPS platform, your vehicle operating data is accessible at all times. Let our digital solutions help you support and streamline your day-to-day operations.

Highlights

- **Plan** your operations more efficiently by creating routes or actions and assigning them to individual drivers or vehicles.
- **Monitor** your airport operations from the workplace and influence them in real time.
- **Create** visually appealing **reports** to the management team, the public, sub-contractors or other stakeholders.
- **Optimise** and **automate** your processes, procedures and material planning activities.
- **Monitor** your machine status remotely and get **automated notifications and alerts** for anomalies or potential failures.
- **Take advantage of maintenance planning support** to ensure optimum utilisation of available workshop capacity and machine uptime.

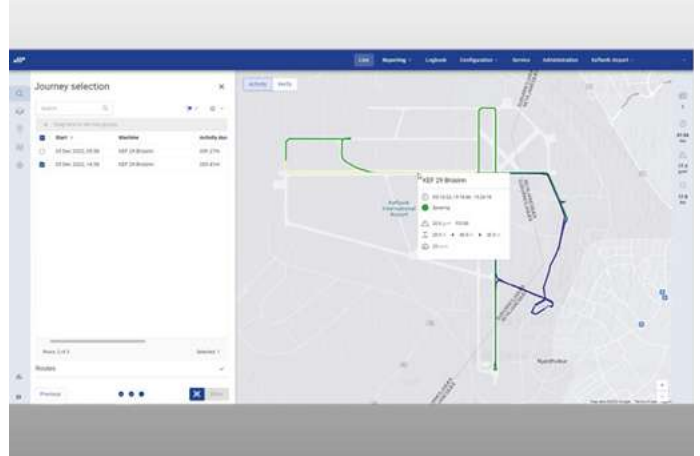
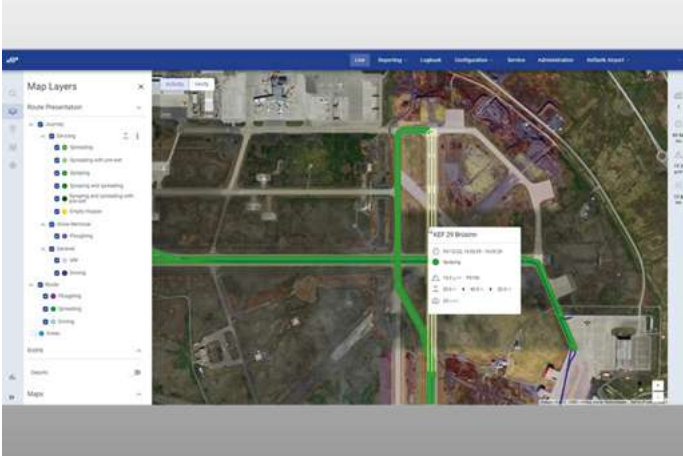
Your benefits

- **Swift performance evaluation.** Track your vehicles on a customisable map and intervene in the process remotely if needed.
- **Increase performance.** Gain clear insight into your vehicle activities and status by analysing detailed reports on productivity, activity and speed.
- **Increase efficiency.** Make key operational processes more efficient by comparing your airport operations actions.
- **Reduce costs.** Optimise the use of your resources and save fuel by analysing the energy consumption statistics.
- **Improve sustainability.** Lower your CO₂-emissions by efficient use of resources and route optimisation.
- **Minimise costly downtimes** by monitoring your machines, reacting to potential breakdowns at an early stage and scheduling maintenance work in good time.

Features

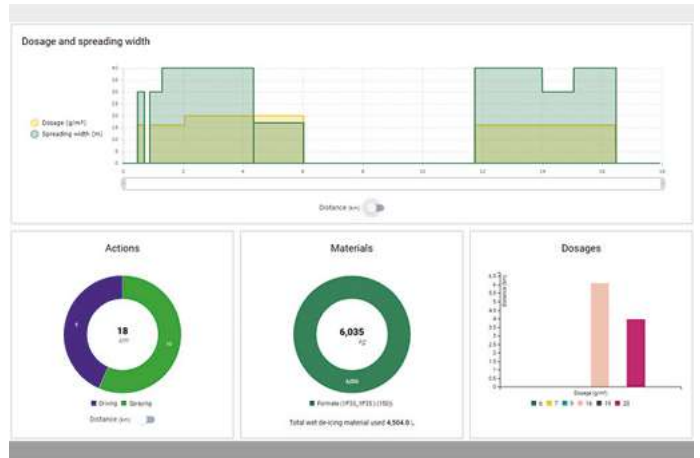
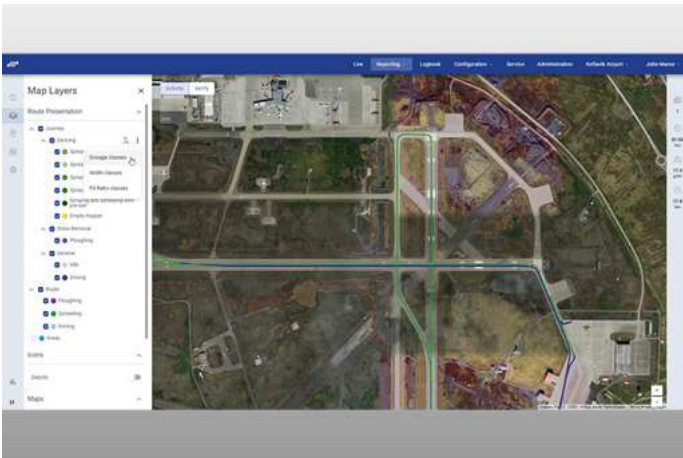
Monitoring

The module Monitoring gives you quick **real-time insight** into the activities and status of your vehicles on customisable maps with several predefined layouts, adjustable filters and personal settings. You can instantly see which vehicles are in operation, whether they are driving, sweeping, spreading, spraying, when they started, how long they are running, how fast they are operating and when they returned to the garage. In addition, you can view the stock of used materials in real time and define alerts for critical levels.



Analysis & Reporting

Check and improve your operational efficiency by analysing detailed reports on productivity, activity and speed. Get insights into deviations from planned work and dosage with our **ride-route compare functionality**. Analyse energy consumption statistics and refine or adjust your processes accordingly. You can export daily, weekly, monthly or seasonal reports to Adobe Acrobat and Microsoft Excel



Module: Maintenance

Quickly identify and respond to faults, **minimising costly downtime** with remote diagnostics. The dashboard displays automated notifications and alerts for anomalies or potential failures, so that action can be taken before serious problems arise. Proactive remote diagnosis of problems reduces the need for physical intervention and saves valuable time.

Timely maintenance ensures optimal machine performance and extends machine life. Remote diagnostics helps plan maintenance based on maintenance history and the actual condition of the machine. This ensures optimum use of available workshop capacity and machine uptime. Parts and materials can be ordered in a timely manner.

We know how important it is that your machines and equipment are always ready to deploy. Get in touch with us about our range of tailored services and original spare parts.



Packages & Modules

Create the package of digital solutions that best suits your needs. Here's the detailed overview of the features.

Data & Connectivity

Data & Connectivity	Modem per vehicle
	Data Transfer and Cloud Storage
	Data Exchange API, supply data to third party system (EN15430)

Route Manager

Route Manager	Create & fine-tune routes and areas online
	Maintain routes and incorporate temporary deviations
	Send routes by air to vehicle ¹
	Driver Messages – reports situations that need attention ²
	Adjust spreading parameters automatically

Asset Management

Asset Management	Overview of all equipment and driver related information per depot
	Assign depots and drivers to machines
	Manage users and their permissions
	Do scenario-based action planning, incl. e.g. weather driven scenarios

Monitoring

Monitoring	Get real-time list & map view of vehicle activities & status
	Access live weather data
	Receive automated alarms in case of deviations from planned actions
	Visualize real-time activity such as driving, sweeping, spraying etc.
	Customizable maps: several predefined layouts, adjustable filters, statistics, personal settings, etc.

Analysis & Reporting

Analysis & Reporting	Analyze detailed reports on productivity, activity and speed
	Export to Adobe Acrobat and Microsoft Excel (pdf, xlsx, csv)
	Get insights into deviations from planned route, work type & dosage
	Create reports based on activities in areas of interest
	Generate invoice to third parties

Maintenance

Maintenance	Remote monitoring of the machine performance
	Create maintenance plans per machine
	Set maintenance alerts to pre-defined recipients

¹ only available with Data & Connectivity

² only available in combination with a Winter Service Licence

