

Used machines offer

MT 750 - Euro 6, with hydraulic and tipper

Offer number: UM2799649

 **aebi schmidt**
group

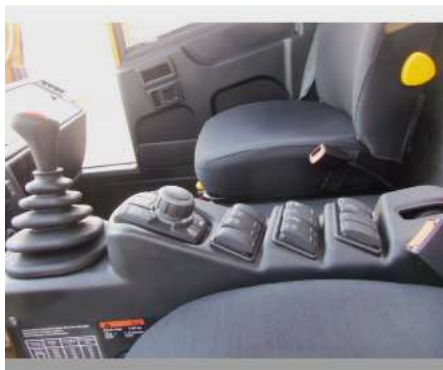


Brand: Aebi
Mat.-Nr.: 1351386-0
Year of manufacture: 2019
Serialnumber: TAH31100EK1252030
Running hours: 61 h
Mileage: 961 km
Condition: Class 4
Location: Germany
79837 St. Blasien

Price: **On request**

The offered MT 750 4X4 Euro 6 Speed limit 85 km/h, 7.5 t

Gallery





Equipment

Basic Machine

P1270177-5	Aebi MT750, EU6C, 156hp, 6 cylinder
------------	-------------------------------------

Speed/Propulsion

P1191232-6	speed limit 85 km/h, 7.5 t
PM7-V00	Permanent 4x4 drive with lockable center differential (recommended winter service)
PM7-V01/11	Differential lock rear axle

Wheelbase/Suspension

P1190246-2	wheelbase 2.75 m
------------	------------------

Seats

PM7-K06/11	standard seat
PM7-K05	single seat without suspension and adjustable for passenger

Tires

PM7-R28	245/70 R 17.5 (143/141J) 17.5 x 6.75 SIMPLE
---------	--

Cabin

PM7-C98	cabin color orange RAL 2011
PM7-K04/9	air conditioning
PM7-K03/4	Heated windshield
PM7-K09/7	Heated exterior mirrors
PM7-E01/1	3-pin socket outside for winter service lighting
PM7-K20/2	winter service lighting bar with 4 headlights and all-round
PM7-E03/1	13-pin socket outside for rear attachment for trailer operation

Hydraulics

PM7-H31	2nd circuit 14.4 ccm pump motion hydraulics & 21.1 ccm pumpPerformance hydraulics 2x movement hydraulics, incl. tipping function Three-way tipper 30l/min ma Clutches 1 - 4 front right, each double-acting with floating position 1 x single-acting for tippers with floating position. All couplings can be operated with the joystick. 1x power hydraulics P (pressure) rear right with tank return T and Leakage oil line TL, 50 l/min max. 180 bar
---------	---

Options

P1283068-0	Radio DAB+/Bluetooth/USB
P1250651-2	Corrosion Pack
P1203693-1	Warning markings red/white 2 marks on the front, 1 per side, 4 on the back wall of the cabin
PM7-A30	front panel DIN B (size 3)

PM7-T13/2	trailer hitch ball head 3.5 t (type DEDALO GS501)
P1219786-5	Rear axle single, standard springs
P1238859-7	Clutch Booster
P1229917-6	SSR professional footwell heater
Customer special equipment	
1236918-0	Ball point frame, wheelbase 2,750mm including tipping cylinder
1265013-3	Work lights on tripod LED

Contact

Thomas Stoll
 Sales Back Office
 Phone: +49 5119 788 629
 E-Mail: thomas.stoll@aebi-schmidt.com



© Aebi Schmidt Group
www.aebi-schmidt.com

Aebi Schmidt Holding AG
 CH-8050 Zurich, Switzerland

All rights reserved. Technical data is subject to change.
 Illustrations are not binding. Errors and amendments excepted.

Document created on 4 SEP 2024

